



## Three Rivers AG INVESTMENTS

For further information,  
please contact:

### Jack Doughty

4960 South Gilbert Road  
Suite 1-606  
Chandler, AZ 85249

Office: (480) 802-2305

Cell: (602) 228-0563

jdoughty@threeriversag.com  
www.threeriversag.com

# RICHLAND 160 FARM

Cochise County, Arizona

160 Acres

Offered by: Jack Doughty, Three Rivers Ag Investments



**LOCATION** The farm is located near the community of Sunsites on the north side of Birch Road about one mile west of Highway 191, approximately 15 miles south of I-10, Cochise County, Arizona.

**ACREAGE**

Total Acres	160.00
Cropland Acres	120.00 Est.

**LEGAL** Generally described as the southeast quarter of Section 2, Township 17 South, Range 24 East, Gila and Salt River Base and Meridian, Cochise County, Arizona.

**APN** 118-01-002B

**IRRIGATION** The farm has one active irrigation well delivering water to one seven tower 1999 Valley center pivot sprinkler system. Well is 600' deep with 16" casing with 12" liner, turbine pump with 150 hp motor producing about 800 gpm.

**SOILS**

Series	Class	Approximate %
TwA – Tubac sandy clay loam	IIIs	100

**ELEVATION** 4,270' – 4,313'

**FLOOD ZONE** Zone X, area of 0.02% annual chance flood and areas of 1% annual chance flood average depths of less than one foot. FEMA flood map 04003C1330G.

**ZONING** RU-4, Cochise County, AZ.

**TAXES** \$459.68 per year based on 2021 taxes.

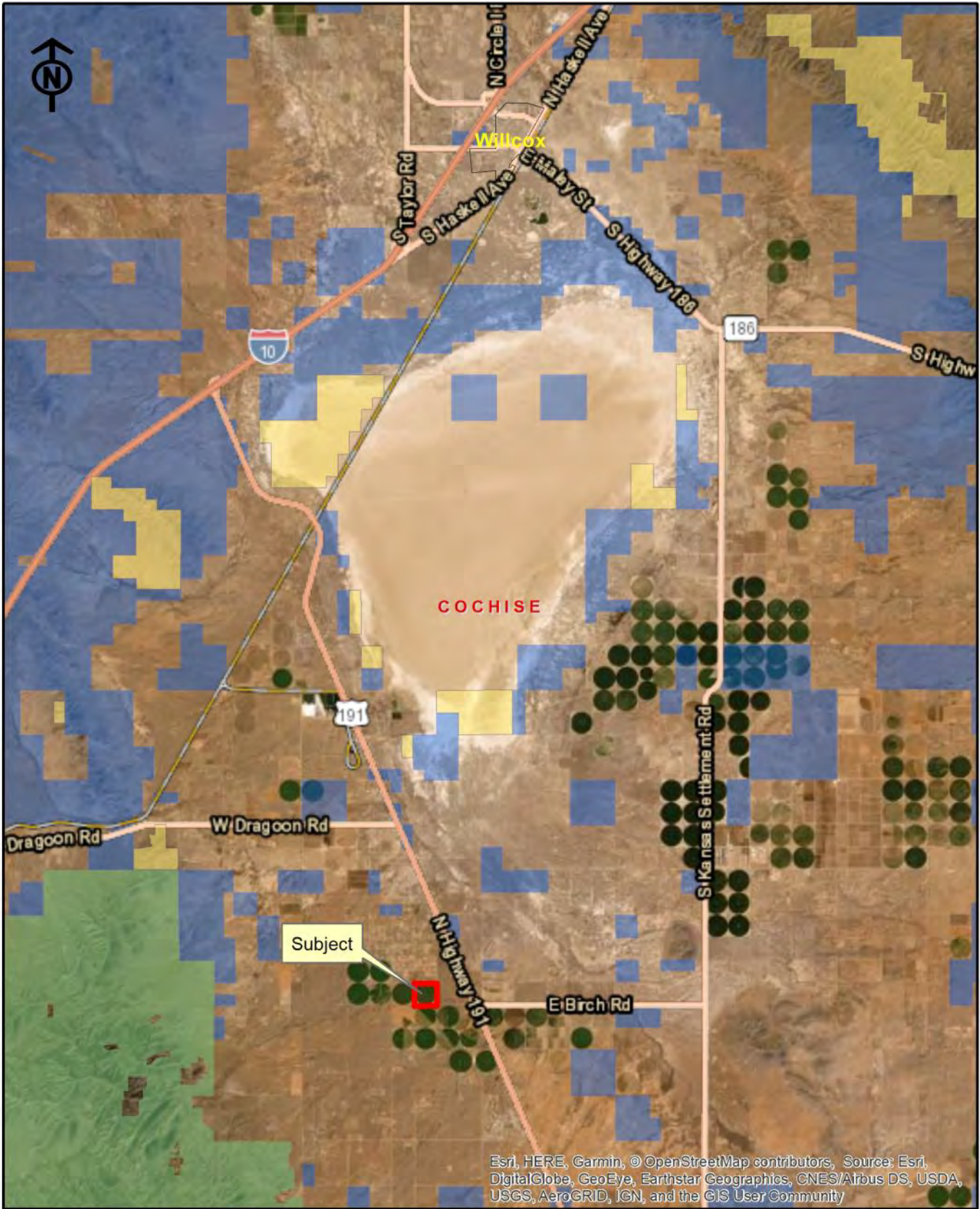
**PRICE** \$1,040,000

**TERMS** Cash

**COMMENTS**

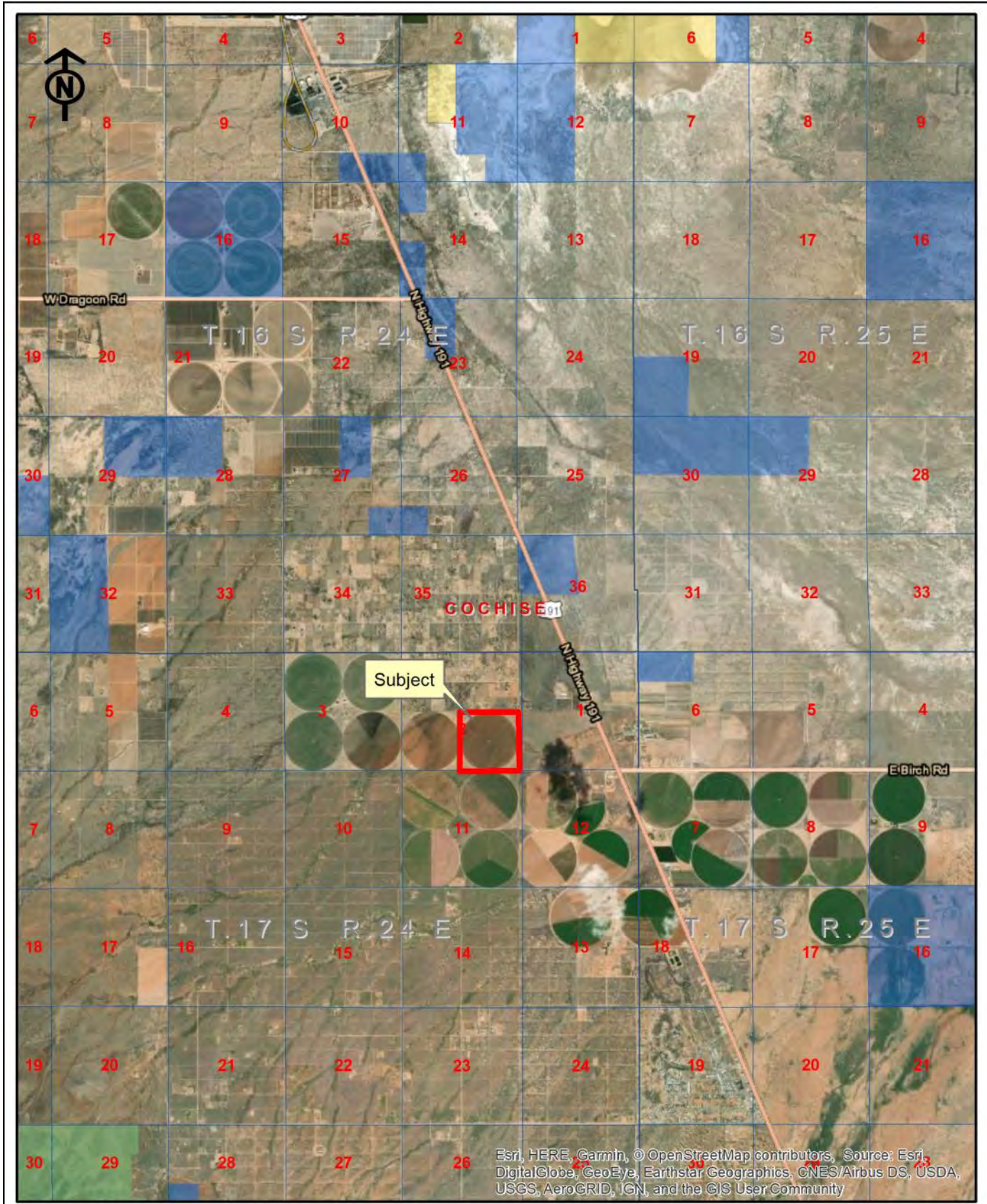
- Seller would consider a lease back.
- Considered a warmer area of the Valley with good air drainage.





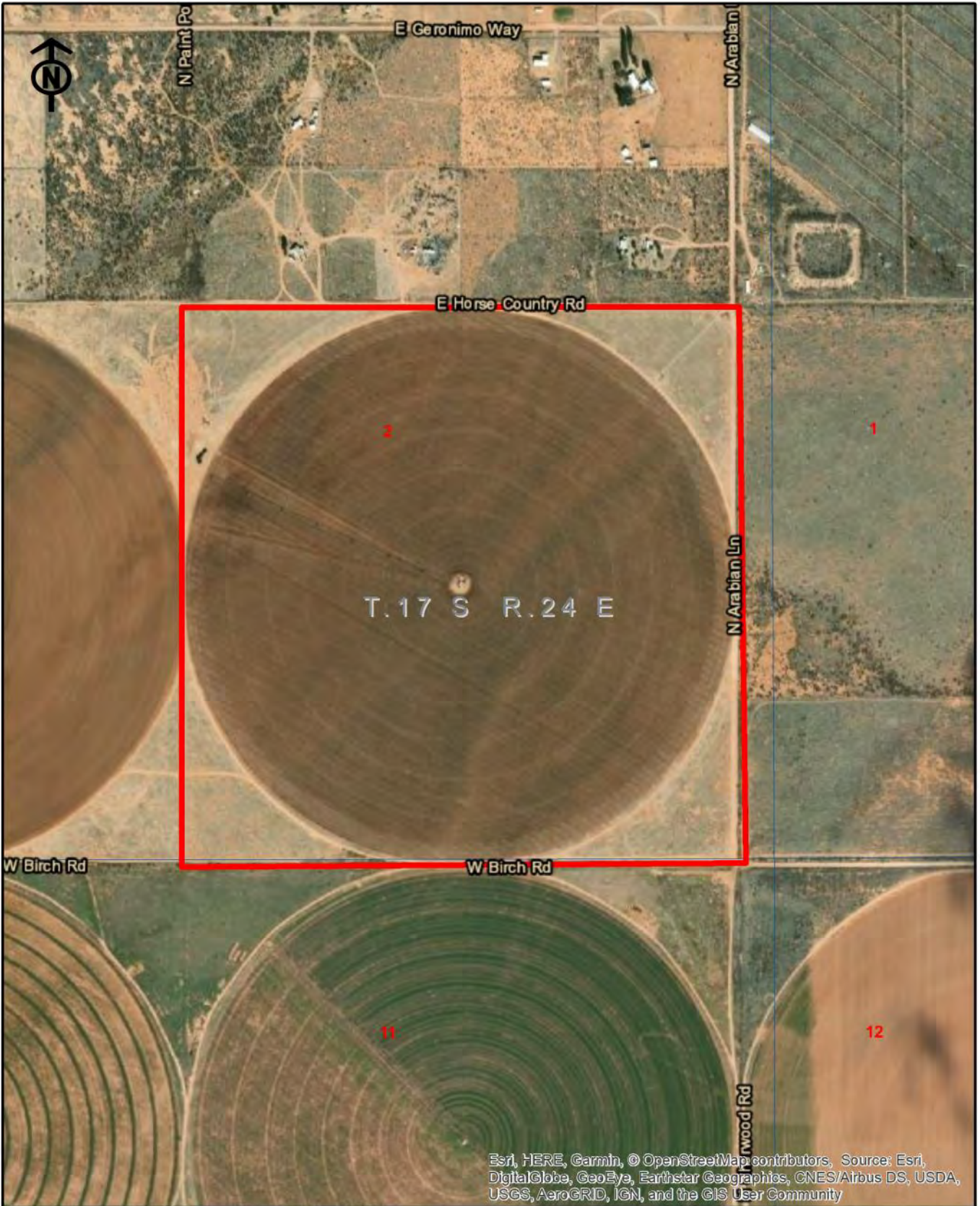
**Three Rivers Ag Investments**  
 Richland 160  
 Location Map

Jack M. Doughty  
 (480) 802-2305 (Office)



**Three Rivers Ag Investments**  
 Richland 160  
 Area Map

Jack M. Doughty  
 (480) 802-2305 (Office)



# Three Rivers Ag Investments

Richland 160  
Aerial Map

Jack M. Doughty  
(480) 802-2305 (Office)

**RICHLAND 160 FARM, COCHISE COUNTY, ARIZONA**



Seven tower Valley center pivot



Growsmart control panel

**RICHLAND 160 FARM, COCHISE COUNTY, ARIZONA**



Turbine pump, electric motor with gas engine backup



Dormant alfalfa, winter 2022