



Three Rivers
AG INVESTMENTS

For further information,
please contact:

Jack Doughty

4960 South Gilbert Road
Suite 1-606
Chandler, AZ 85249

Office: (480) 802-2305
Cell: (602) 228-0563

jdoughty@threeriversag.com
www.threeriversag.com

MORNING DOVES FARM

Pima County, Arizona

1,600 Deeded Acres / 680 State Ag Lease Acres

Offered by: Jack Doughty, Three Rivers Ag Investments



LOCATION

The farm is located within the Aguirre Valley, west of the Silverbell Mountains, approximately 23 miles south of Arizona City, Pima County, Arizona.

LEGAL

Deeded: South half of Section 9 and all of Sections 17 and 21, T11S, R6E, G&SRB&M. State Ag Lease: Southeast quarter of Southeast quarter of Section 16 and all of Section 22, T11S, R6E, G&SRB&M.

APN

Deeded: 207-06-005, 008, 015 and 016. State Ag Lease: #01-1646.

ACREAGE

	Fee Land	State Ag Lease	Total
Gross acres	1,600	680	2,280
Cropland acres	1,141	540	1,681
GFWR	1,309	579	1,888
MAWA	3.88	3.68	3.82

IRRIGATION

Irrigation water is delivered to laser leveled fields through a series of concrete ditches. The farm has seven active irrigation wells with depths ranging from 865' to 1,300' with an average production of 1,110 GPM per well. Power for the electric driven irrigation pumps comes from the farm's inclusion within the Silverbell Irrigation and Drainage District ("SBIDD"), whose primary purpose is to deliver its allocation of preferential hydro power from the Arizona Power Authority to member lands. Additional power comes from TRICO Electric District, which manages the SBIDD.

WATER RIGHTS

The farm holds two certificates of grandfathered water rights. Certificate #58-109049.0003 on the deeded land for 1,309 acres with an annual allotment of 5,075.20 af and Certificate #58-107356.000 on the State Ag Lease land for 579 acres with an annual allotment of 2,133.31 af.

FEMA

Flood Zone A (subject to inundation by the 1% annual chance flood).

SOILS

Series	Class	Approximate %
44-Mohall loam	I	26
83-Vecont clay loam	IIIw	74

IMPROVEMENTS

2,500 s.f. metal shop building, 50% enclosed. Two labor homes and various out buildings.

ELEVATION

1,684' – 1,743'

ZONING

RH-Rural Homestead, Pima County

TAXES

\$12,417.65 per year, based on 2020 taxes.

STATE AG LEASE FEES

\$16,900.00 per year, based on 2021.

PRICE

Submit

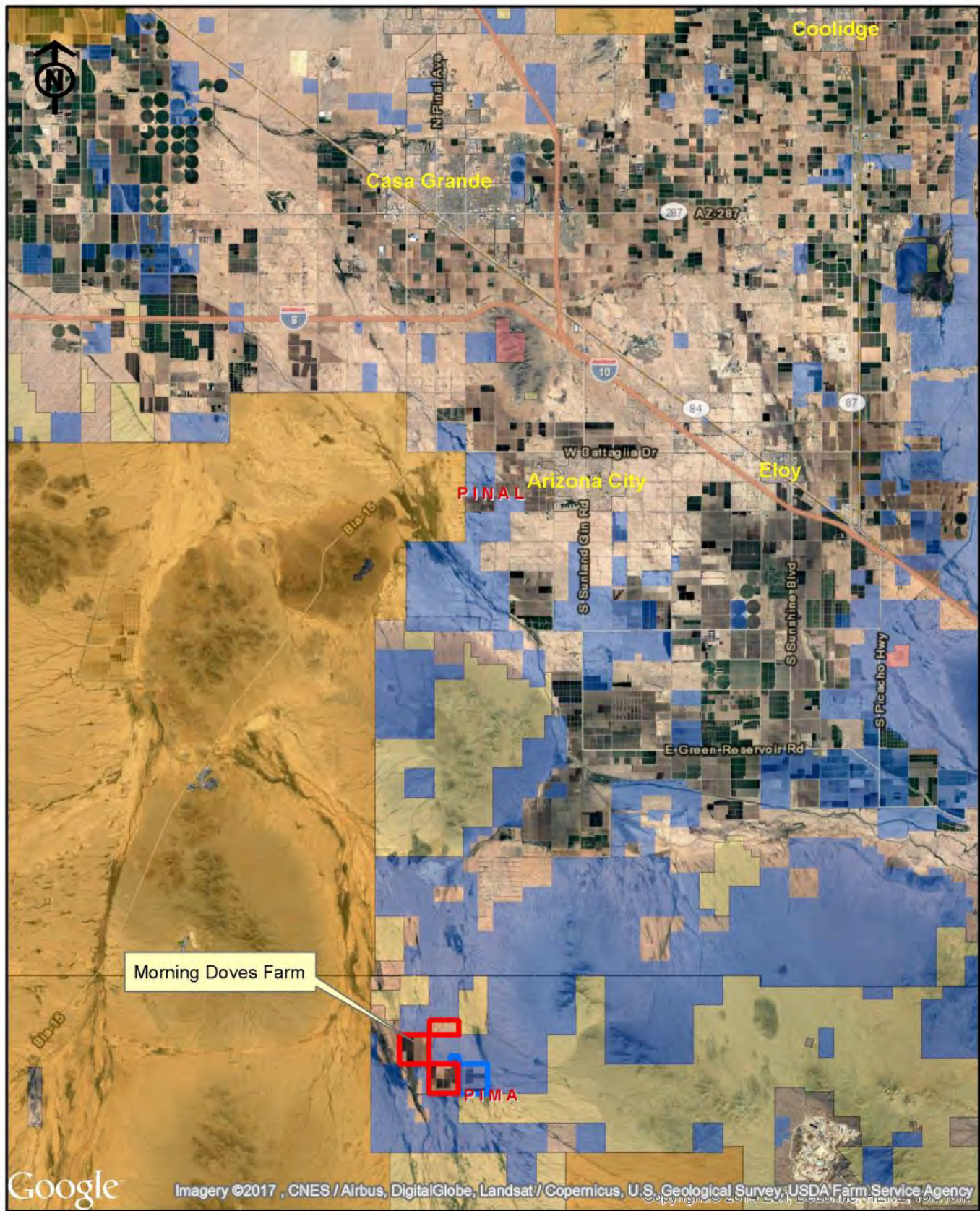
TERMS

Cash

COMMENTS

- Isolated farm provides attractive platform for seed variety expansion contracts.
- Farm is not reliant on Central Arizona Project water.



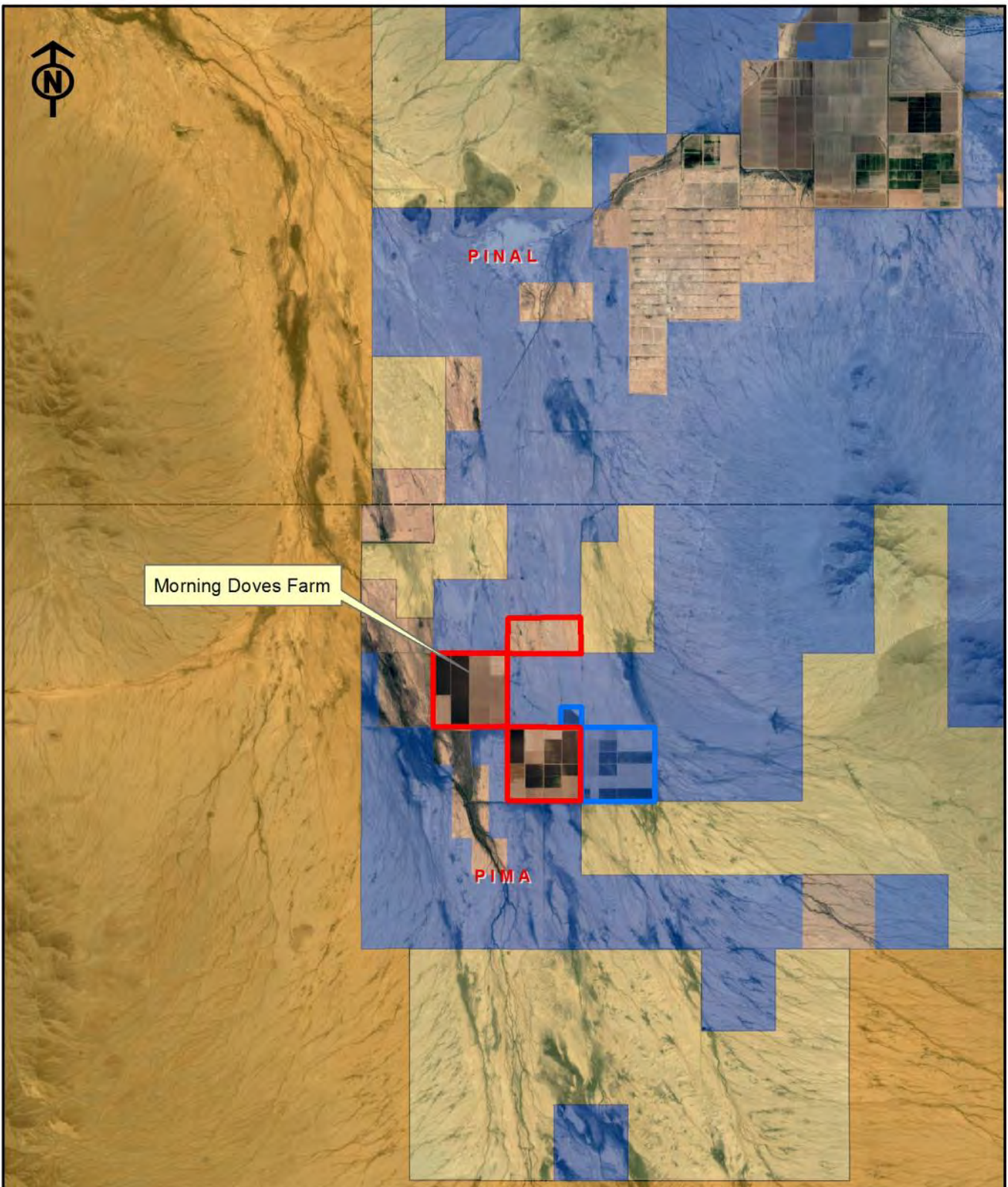


Google

Imagery ©2017, CNES / Airbus, DigitalGlobe, Landsat / Copernicus, U.S. Geological Survey, USDA Farm Service Agency

Three Rivers Ag Investments
 Morning Doves Farm
 Location Map

Jack M. Doughty
 (480) 802-2305 (Office)



Morning Doves Farm

PINAL

PIMA

Google

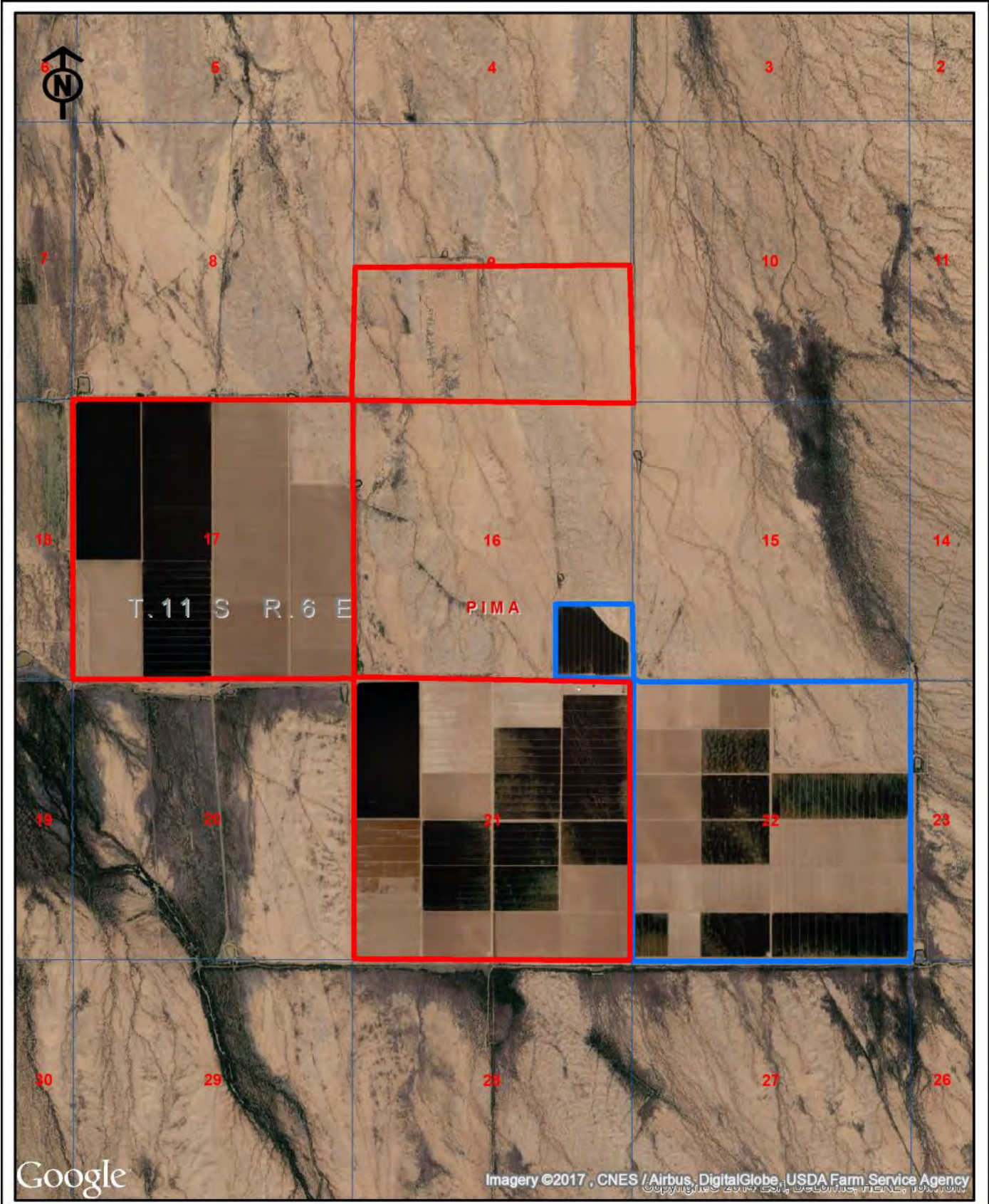
Imagery ©2017, CNES / Airbus, DigitalGlobe, Landsat / Copernicus, U.S. Geological Survey, USDA Farm Service Agency

Three Rivers Ag Investments

Morning Doves Farm

Area Map

Jack M. Doughty
(480) 802-2305 (Office)



Three Rivers Ag Investments
Morning Doves Farm
Aerial Map

Jack M. Doughty
(480) 802-2305 (Office)

MORNING DOVES FARM, PIMA COUNTY, ARIZONA



2017 cotton crop



Well no. 1, 1300' deep, 16" casing, 250 hp., 1,100 gpm

MORNING DOVES FARM, PIMA COUNTY, ARIZONA



Shop building 2500 s.f. metal over concrete, 50% enclosed



One of two labor homes, 1,080 s.f.